

matrixpro



ARCHITECTURAL LIGHTING



Nowadays façade lighting and media façades become a key element of the external appearance of architecture. With façade lighting, special features for the architecture can be highlighted and buildings or monuments can be transformed to genuine landmarks. Dynamic colored or CCT LEDs, video screens and contour lighting can help to create impressive effects by giving buildings their own character and making them an attractive addition to the cityscape, both day and night.

In order to preserve the uniqueness and artistic value of the building, Matrix Pro do not use only ready-made or off-the shelf components, but also products & parts designed specifically for you. Perfect cooperation with the project engineers helps us add value to the design with a total satisfaction of the client who can get the best affordable results.

Our experience in the industry allows us to present the most efficient solution to our clients, in time and budget wise. Matrix Pro can provide you services for studies, design, supply, installation and long term after sales services for the scope of concept illumination lighting projects.



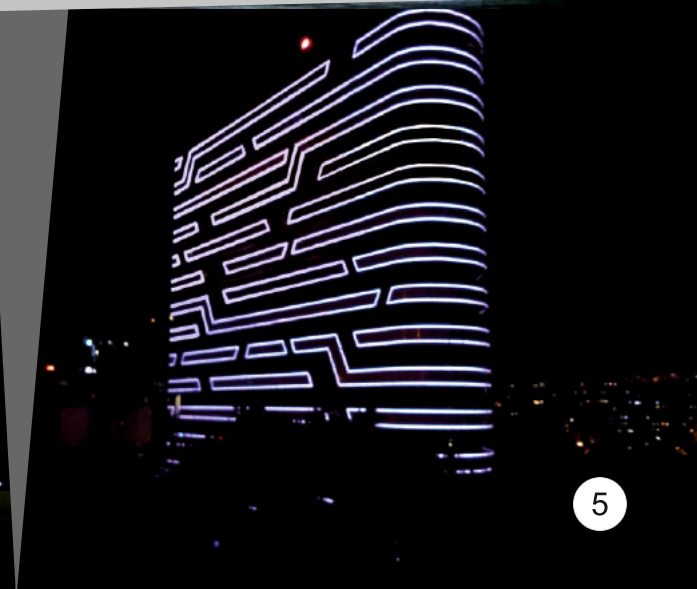
TRUMP TOWER BAKU

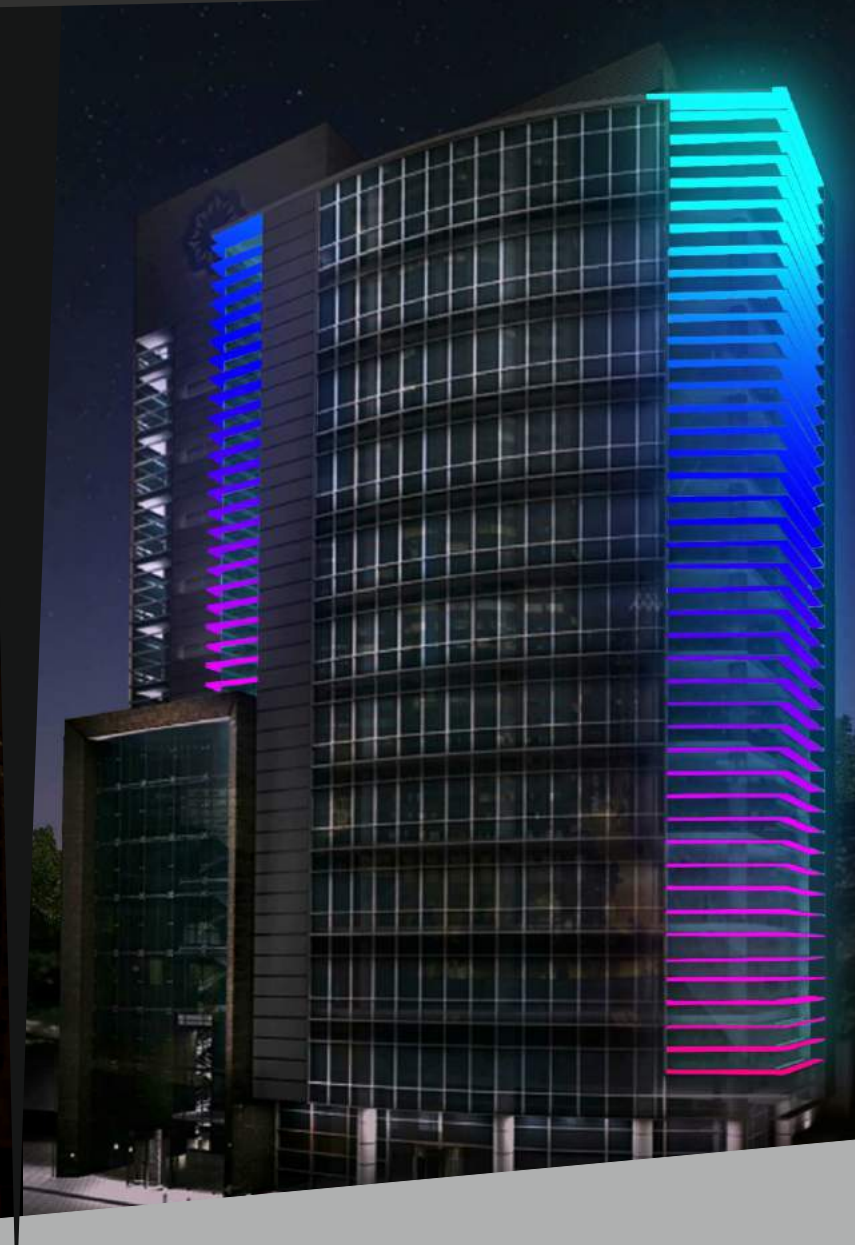


matrixpro

Matrix Pro has successfully executed many lighting and media projects in Turkey and Azerbaijan. Major landmarks such as Yavuz Sultan Selim Bridge (3rd Bosphorus Bridge) and Feryafı Parıma in Istanbul/Turkey, Trump Tower and Neon Wedding Palace in Baku/ Azerbaijan are amongst them.

Smaller unique designs and applications in various projects are also created for our clients by our team. Matrix Pro and its partner network have the experience, drive and commitment to make your project a success from scratch.





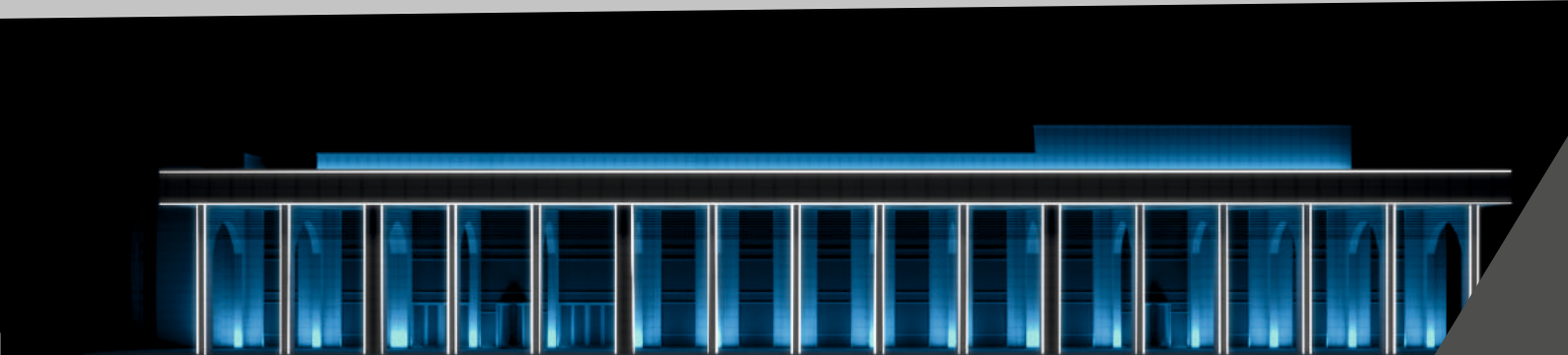
We are a dedicated team of professionals serving our clients from conceptual phase to construction documents until the final adjustments to supporting system commissioning during the project phases. Through a structured and managed service process, we ensure the highest degree of professional attention is achieved. Even if you don't have any initial design in mind, our creative team can provide you ideas out of the box to give to your monuments, buildings, landscapes or interiors a unique way of look.

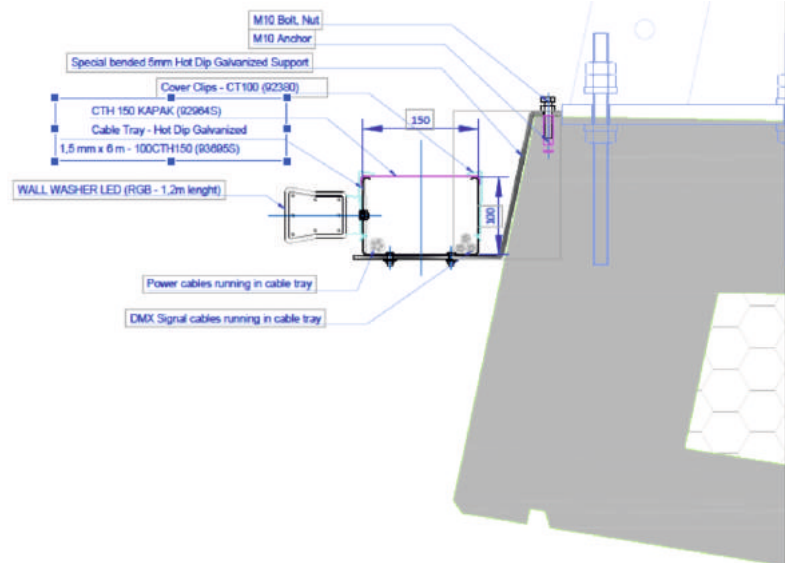
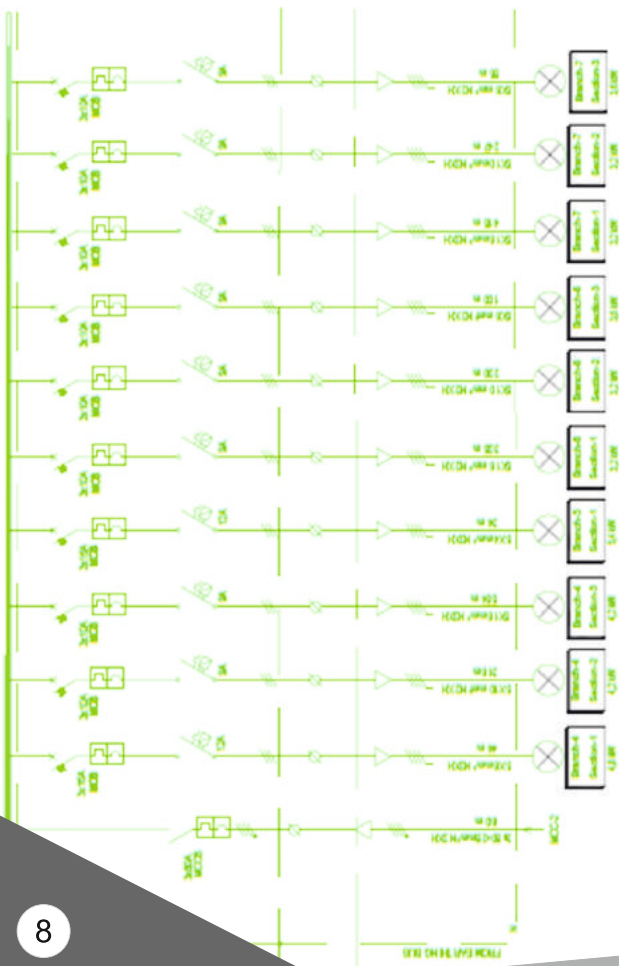
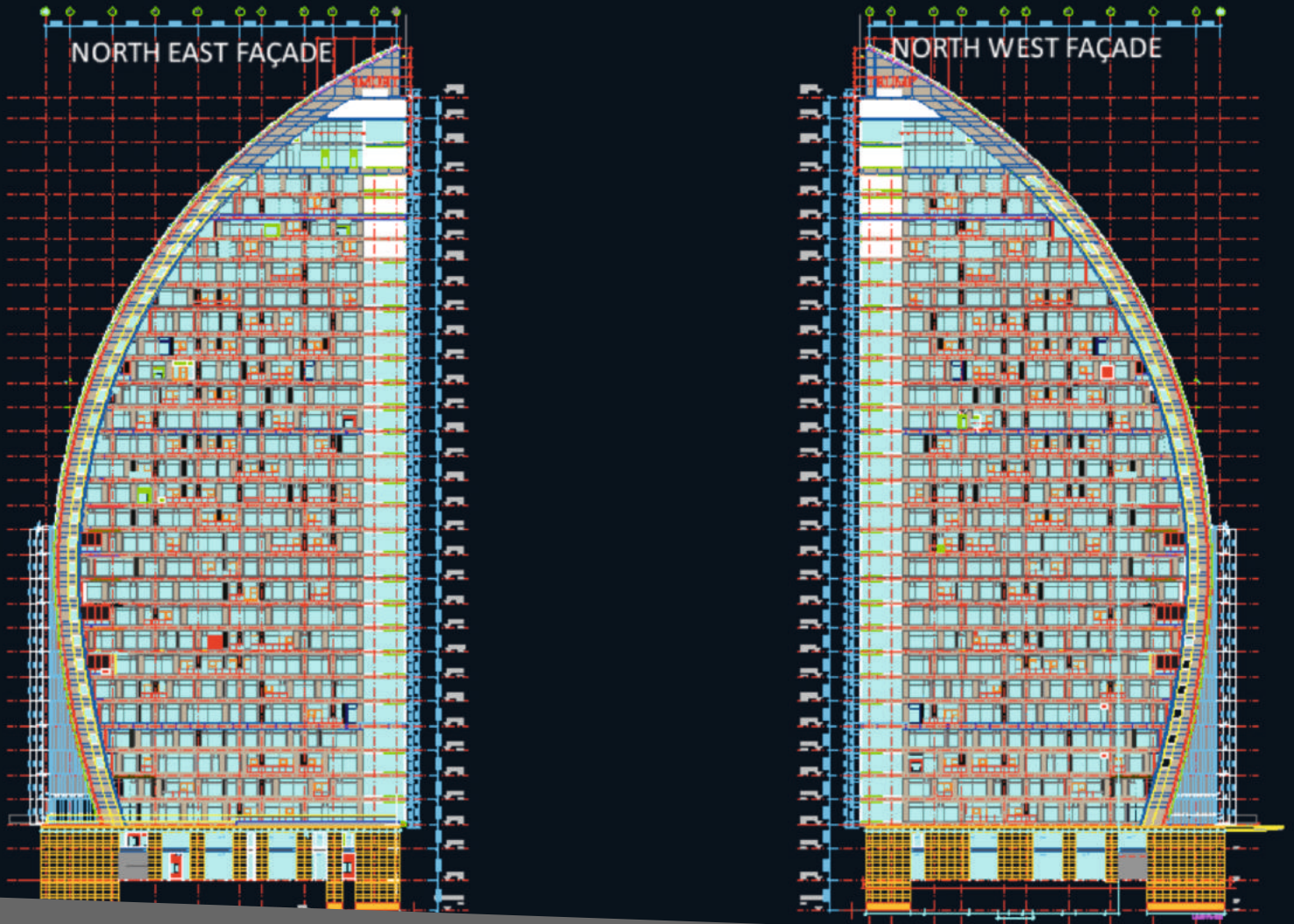
For cases with a design in hand, we will be following your requirements both for the technical and concept to end with the best possible result.

With the help of our realistic simulations, we will build a platform for an interactive cooperation during our project discussions with you and your project partners.

Once the concept design is accepted, in most cases ideas may change. When it comes to choose the right products fitting to your plans, we are always there for you.

Since, designers & experts involved with large scale and smaller projects often have situations where a "standard" industry product will not work; our in-house team strives to find them the best possible solution. Often their requirements range from specific environments to a distinct design effect. We can customize a standard product or provide a custom solution for those needs while considering environmental conditions and final output.





In total coordination with your project management team, consultants and designers, we can present you cost efficient solutions matching with your technical conditions or requirements.

Our system designs and shop drawings will be offered prior to installation phase, as a projection.

In accordance with the client benefits, Matrix Pro will be looking out for maximum compatibility within existing concept and for the most affordable conditions for the next step, the installation.





INTERNATIONAL BANK OF AZERBAIJAN

matrixpro

TRUMP TOWER BAKU





In projects, after choosing materials and how to work technically, installation or in other words application is the most important stage. To conform the general aesthetic and to have the most cost affordable mounting and control options for the most reliable system with the less maintenance will be our main target.

During and after installation stages, safety regulations will be our utmost motive. No matter in which environment your project is located, products and installation components will be chosen carefully in order to have the longest possible lifespan.

Our programmers and supervisors will be completing the works after programming the whole system tailored exactly regarding your needs to impress and become a landmark.





FER YAPI PARIMA - ISTANBUL

YAVUZ SULTAN SELIM BRIDGE - ISTANBUL





Following a successful project, after-sales services will be our priority. Besides the warranty program, Matrix Pro will be connected to you in case you need us with remote or site supports.

Your satisfaction will be our first goal and to become your lifetime solution provider is our mission.



matrixpro

TURKEY OFFICE

Address : Next Level No:3 A Kat:4 D.No:10
PK:06520 Çankaya / Ankara

Tel: +90 312 945 4796
Fax: +90 850 522 3403
e-mail : info@matrixpro.pro

UZBEKISTAN

Address: 20 Mustaqillik Ave, Tashkent, 100017

Tel: +998 93 531 99 99

e-mail : info@matrixpro.pro

AZERBAIJAN OFFICE

Address: Badamdar Qes. Massive 1 donge 5 Ev: 41 Baku, AZ1004

Tel & Fax : +994 12 502 5995
e-mail : info@matrixpro.pro

INGENIOUS INTEGRATIONS WITH EXPERIENCE

www.matrixpro.pro